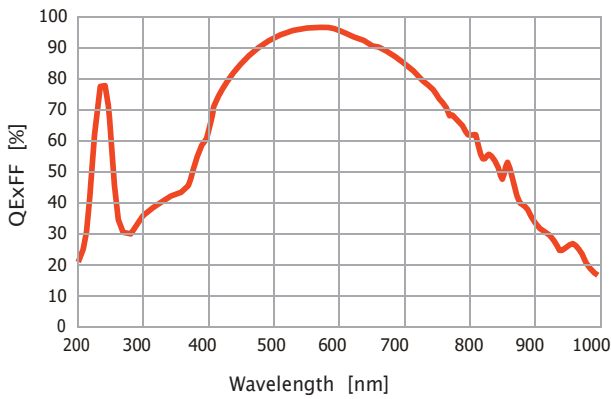


Compact BSI sCMOS Camera Dhyana 901

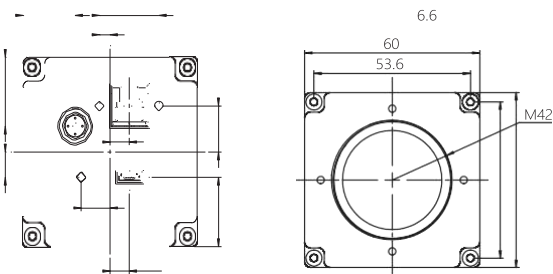


Key Features

- 2" area
- 95% peak QE
- USB3.0
- 11µm x 11µm pixel size
- 90ke- full well capacity



Product structure (unit: mm)



Specifications

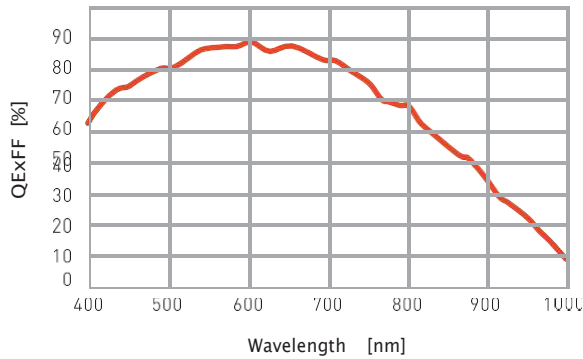
Model	Dhyana 901
Sensor size	2"
Sensor model	BSI sCMOS
Color/Mono	Mono
Resolution	2048 x 2048
Pixel size	11µm x 11µm
QE	95% @ 560nm
Readout noise	HighGain : 1.6e-(Median)/1.7e-(RMS)
Full-Well capacity	90ke-
Minimum illumination	0.0001 lux
Dynamic Range	>93dB (HDR mode)
Shutter type	Rolling
Exposure Mode	Manual / Auto / Trigger
Exposure time	20µs~10min
Parameter Setting	Image enhancement, ROI, Gamma, Mirror flip, Contrast, External trigger, Filtering noise reduction, Gain regulation, HDR
Data Bit Depth	16bit
Frame rate	23fps(2048 x 2048)
Optiona Interface	T/EF mount
Data Interface	USB3.0 5Gb/s
Power interface	USB 3.0 ,USB2.0(optinal)
Voltage	5V
Power consumption	3W
Dimensions	60 x 60 x 64.3mm(Camera) 53 x 53 x 40mm(Module)
Weight	351g(Camera) 72g(Module)
Operating Environment	Temperature: -40~50°C

Compact FSI sCMOS Camera Dhyana 401D/201D

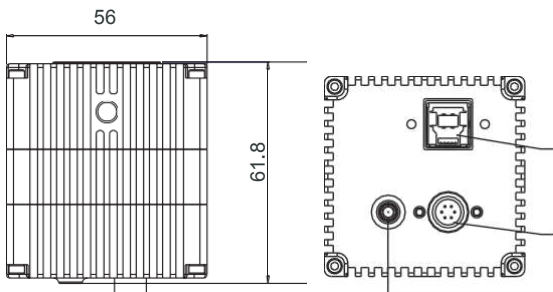
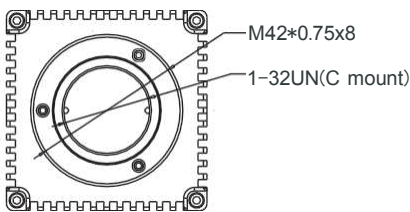


Key Features

- 1"~1.2" area
- 6.5 μ m x 6.5 μ m pixel size
- 72% peak QE
- 45ke-full well capacity
- 40fps@full resolution
- USB3.0 interface



Product structure (unit: mm)



Specifications

Model	Dhyana 401D	Dhyana 201D
Sensor model	FSI sCMOS	
Shutter type	Rolling	
Color/Mono	Mono	
Effective area	13.3mm x 13.3mm	13.3mm x 7.462mm
Resolution	2048(H) x 2048(V)	2048(H) x 1152(V)
Pixel size	6.5 μ m x 6.5 μ m	
QE	72% \times 595nm	
Full-Well capacity	45ke-	
Frame rate	40fps(16bit), 45fps(8bit)	70fps(16bit), 80fps(8bit)
Readout noise	2.1e-(Median)	
Exposure time	10 μ s-10s	
Binning	2x2, 4x4	
ROI	Support	
Trigger Mode	Hardware & Software	
Output Trigger Signals	Exposure, Readout, High level, Low level	
Trigger Interface	HIROSE	
Data Interface	USB3.0	
Data Bit Depth	16bit & 8bit	
Optiona Interface	M42	
Power Supply	USB3.0	
Power Consumption	< 4W	
Dimensions	50mm x 50mm x 62mm	
Weight	305g	
Software	Mosaic / LabVIEW / Matlab / Micromanager / Samplepro	
SDK	Support	
Operating System	Windows/Linux	
Operating Environment	Temperature 0~40°C / Humidity 10~85%	

Compact FSI sCMOS Camera Dhyana 401D/201D

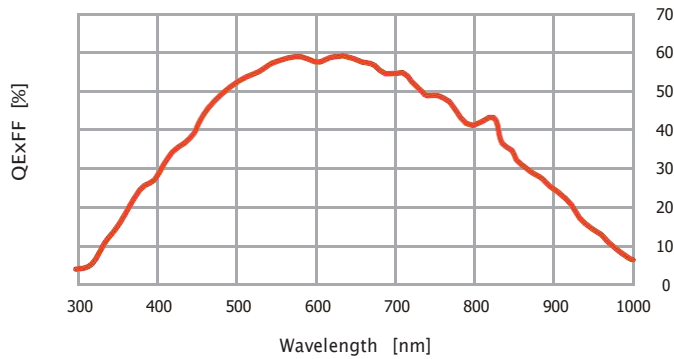


Specifications

Model	Dhyana 401A-G	Dhyana 401A-U
Sensor model	GSENSE400	
Shutter type	Rolling	
Color/Mono	Mono	
Effective area	22.5mm x 22.5mm	
Resolution	2048(H) x 2048(V)	
Pixel size	11µm x 11µm	
QE	58%@600nm	
Full well capacity	90ke-	91ke-
Dynamic Range	> 90dB	
Frame rate	15fps@HDR mode 20fps@STD mode	24fps@HDR 48fps@STD
Readout noise	2.0e- (Median)	
Exposure time	21µs~10s	
Cooling method	None	
Dark current	35e-/p/s @ 25°C	
Binning	2x2	
Sub-array	Support	
External trigger mode	Hardware/Software	
Signal output ports	Exposure / Readout	
External trigger routing	HIROSE	
Data Interface	RJ45(1G GigE)	
Data Bit Depth	16bit/12bit	
Optional Mounts	M42	
Power supply	10~30V 5A 5-0.05	
Power consumption	< 7W	
Camera size	70 x 70 x 70.5(mm), weight 477g	
Camera weight	477g	
PC software	Samplepro	
SDK	Support	
Compatible system	Windows/Linux	
Operating environment	Work: Temperature: 0~40°C, Humidity: 0~80%, Storage: Temperature: -25~60°C, Humidity: 0~90%	

Key Features

- 2" area
- 11µm x 11µm pixel size
- 58% peak QEGigE interface
- 90ke- full well capacity



Product structure (unit: mm)

